

Copyright © 2006, 2007, 2008. LanA Consulting ApS. All rights reserved.

# Linguistic **Analysis Acquisition** of **Keywords**

## **LanA-Key**

### User Manual

Jacobys Alle 23  
DK-1806 Copenhagen,  
Denmark

Tel.: +45 51 22 34 58  
+45 20 15 44 28

Fax: +45 48 79 07 15

e-mail: [lanaconsult@mail.dk](mailto:lanaconsult@mail.dk)

URL: [www.lanaconsult.com](http://www.lanaconsult.com)

# Content

What is LanA-Key.....	3
How to.	
Download files.....	4
Set output file parameters.....	5
Process and save the results.....	5
Technical support.....	6
System requirements.....	7
Installation.....	7
Uninstallation.....	7
Registration.....	5

## What is LanA-Key

**LanA-Key** stands for **L**inguistic **an**alysis **A**cquisition of **K**eywords.

LanA-Key is a keyword/phrase extraction tool, which features high quality output and fast performance.

It is based on the combination of the most successful statistical and linguistic techniques as well as on LanA Consulting linguistic resources.

LanA-Key uses

- a unique algorithm for extraction intelligent one- and multi- word noun phrases and
- a flexible scoring algorithm with multiple parameters
- the values of the parameters can be tuned to
  - a general text as well as
  - to specific domains and applications.

It takes input and outputs results in multiple formats (txt, html, xml, etc.).

It is possible to download and process

- a single file or
- a folder of files; for a folder of files LanA-Key can
  - either extract keywords for every file separately or
  - merge the files and get keywords for a merged text.

The results can be sorted based on Relevancy, ABC order or reverse ABC order.

LanA-Key comes in two varieties:

- LanA-Key U (User) extracts keywords based on efficient fixed relevancy parameters
- LanA-Key R (Researcher) lets the user to set the values of relevancy parameters and access intermediate results which in addition to a keyword extractor makes LanA-Key R a perfect research tool.

## How to download files

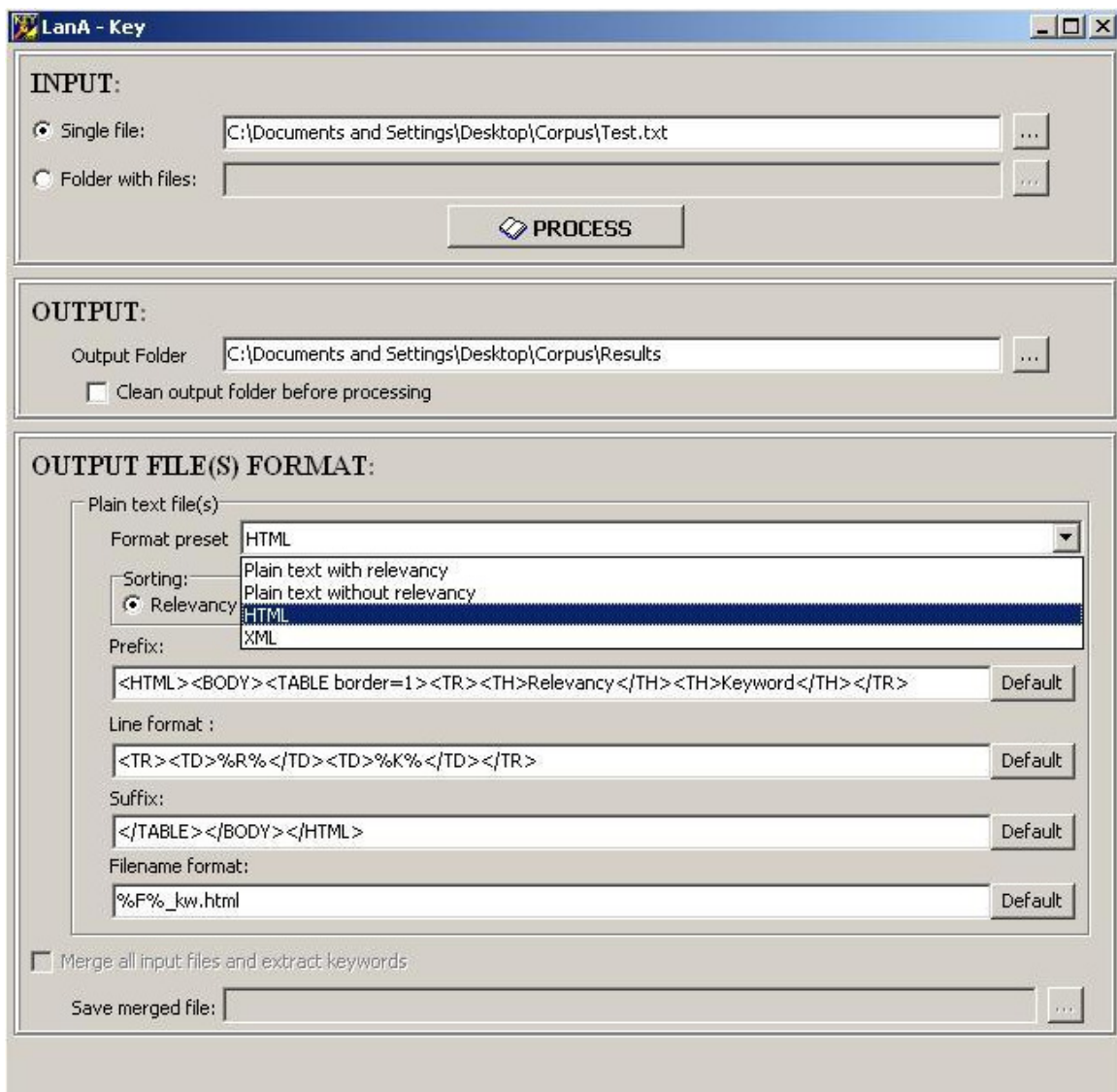


Figure 1. A screenshot of the LanA-Key start up window

LanA Key takes input and outputs results in multiple formats (txt, html, xml, etc.).

Check the radio button “Single file” to download a single file.

Check the radio button “Folder of files” to download a folder of files

## How to set output parameters

You can process your input with default parameters for the output. In such a case simply click the button “Process” after downloading your file or folder of files. These default parameters are: “text file with relevancy scores shown in square brackets”.

To apply your own settings for the output presentation of a keyword list use menus and type in text areas in the section “Output file(s) format”

To set the format for the output file, select the format in the menu of “Format preset”  
To set the sorting parameter check the corresponding radio button in the “Sorting” section.

To set the header for the keyword lists use type it in the “Prefix” text area. Follow the hint for the format:

`%F% %E% %BR%`

For example, if you type in `%F% %txt% %BR%`, the list of output keywords will be headed Input File Name.txt and there will be a break between the header and the first keyword.

To have a closing line in the file of keywords use the “Suffix” text area. The format is the same as for “Prefix”.

To use your own names for the output files you use the “Filename format” text area.

## How to process and save output

To process

- a single file click “Process” after setting the parameters for the output.
- a folder of files, merge the files and get keywords for a merged text check the “Merge all input files...” check box, then click “Process”.
- a folder of files and have keywords extracted for every file separately **uncheck** the “Merge all input files...” check box, then click “Process”.

All lists of keywords are automatically saved in a specially created Result folder. The Result folder is created in the folder which contains input file. Check the “Clean the output folder...” to have the Result folder cleaned.

If you preset an xml or html parameter for the output files the button “Show in browser” is activated. Click this button to see the results in the format you preset.

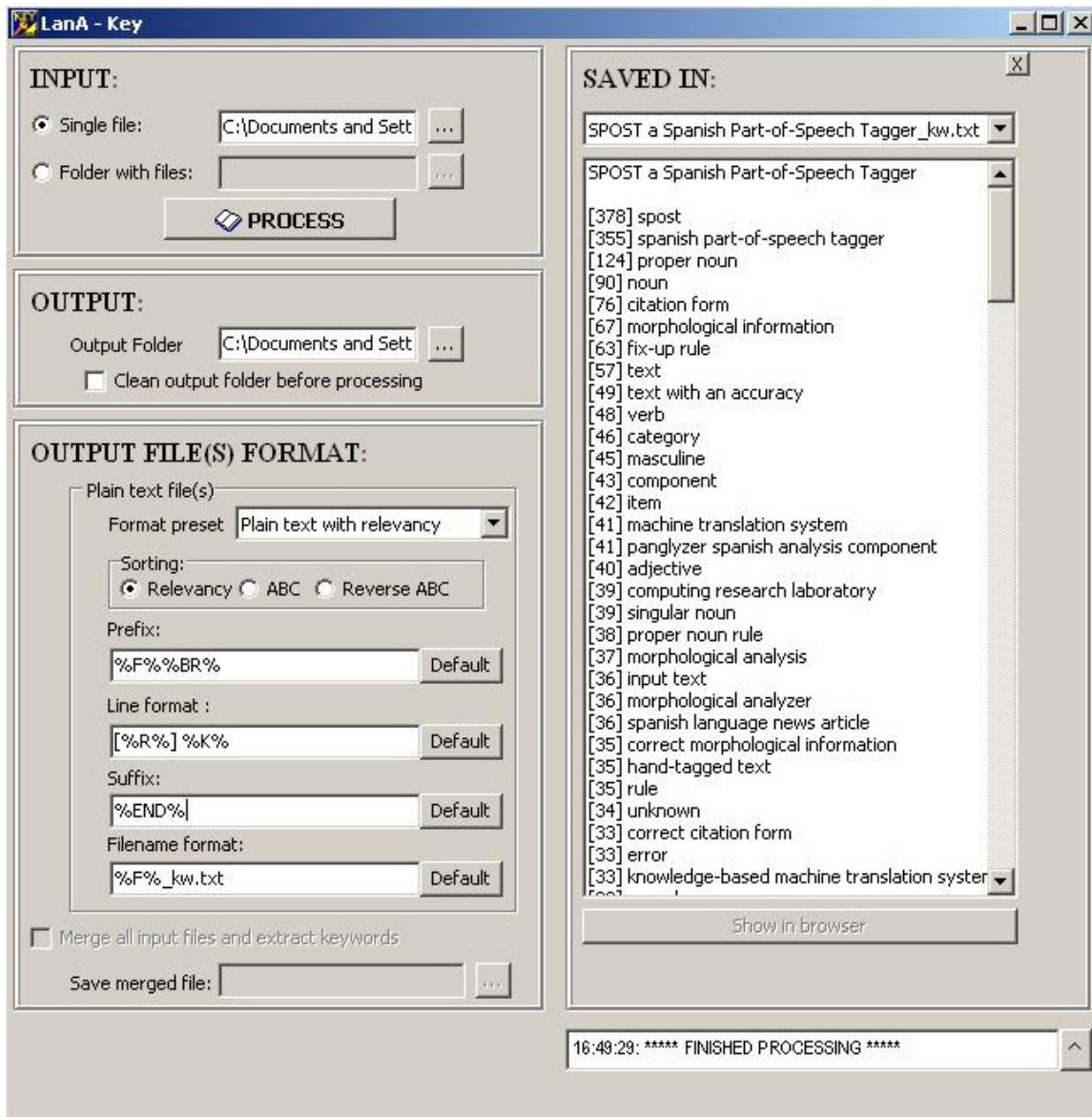


Figure 2. A screenshot of the LanA-Key tool after keyword extraction. The output list is shown according to preset parameters.

## Technical support

LanA Consulting IT Company located in Copenhagen, Denmark, reserves all rights for **LanA-Key** application. All registered users will receive up-to-date information on new versions of this program as well as full support for this system (consulting, training, versions upgrade, FAQ answers etc.).

Contact address: Jacobys Alle 23  
 DK-1806 Copenhagen, Denmark  
 Tel.: +45 20 15 44 28  
 Fax: +45 48 79 0715  
 e-mail: [lanaconsult@mail.dk](mailto:lanaconsult@mail.dk)  
 URL: <http://www.lanaconsult.com>

:

## System requirements

Your system must fulfill the following requirements if you want to run **LanA-Key**:

- **PC:** Pentium processor, 32 MB RAM, 100MB free hard disk space, CD-ROM drive
- **Operating system:** Windows 95/98/Me or Windows NT 4.0/2000/XP

## Installation

To install **LanA-Key** on your personal computer, proceed as follows:

1. **Start the setup program:** Insert the CD-ROM in the appropriate drive and click on the **LanA-Key** setup icon. The program will be installed automatically.
2. **Select the installation directory:** Confirm the suggested installation location (C:\Program Files\**LanA-Key**). You may also choose a different directory.
3. **Select the Program Folder:** Confirm the suggested Program Folder (default: **LanA-Key**). You may type a new folder name, or select one from the Folder list.
4. **Run LanA-Key:** Click on the icon of **LanA-Key** in Program Folder or on the icon on the Desktop, or check the check box "Yes, Launch the program file".
5. **Register:** After you ran the program **LanA-Key**, you will get a pop-up window in which you will see a text field **Serial number**. Type in your serial number in this field and click the button **Update**, you will get another window with your **user code** generated uniquely for your computer. You will be suggested to enter your name and **registration key** to open **LanA-Key**. To get your **registration key** please **e-mail** your **serial number** and your **user code** to *lanaconsult@mail.dk*. We will send you your **registration key** in reply to your message.

## Uninstallation

If you want to uninstall **LanA-Key** proceed as follows:

1. Open the dialog box **Add/Remove Program Properties** by selecting **Settings-Control Panel-Add/Remove Programs** from the Windows Start menu.
2. Select **LanA-Key** for removal.

## Registration

Run **LanA-Key**, to get a window with a field **Serial number**. Type in your serial number and click the button **Update**, you will get your **user code**. You need a **registration key** to open **LanA-Key**. To get your **registration key** please **e-mail** your **serial number** and your **user code** to *lanaconsult@mail.dk*. We will send you your **registration key** in reply to your message.